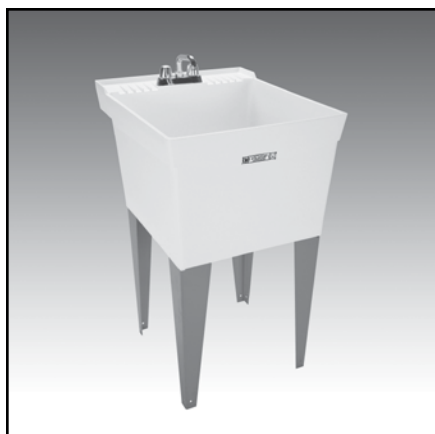




MUSTEE
Preferred by the "Pros"

19F and 19W UTILATUB® Laundry/Utility Tubs — Premier

SEE PAGE 2 FOR A LIST OF ACCESSORIES!



Design features:

- High strength, one piece molded construction
- Produced with Mustee's proprietary structural thermoplastic resins and innovative cellular molding process creating extreme strength & durability
- 18 Gallon capacity, extra deep 13" tub with smooth surface
- Leakproof, integrally molded-in drain with stopper
- Connects to standard 1-1/2" P or S trap
- Accommodates dual-handle faucet with 4" center
- Large, self-draining back shelf with retainer curb that prohibits water run-off except into tub.
- Floor model includes heavy gauge steel legs with adjustable levelers
- Wall model includes wall mounting bracket, side supports and mounting hardware for securing tub to concrete or stud wall
- Mold and mildew-resistant components
- Easy to assemble and install
- Color-fast white finish

Code Accepted:

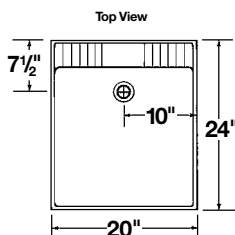
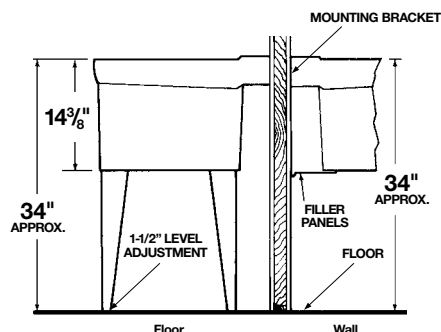
UTILATUB® and UTILATWIN® Laundry/Utility Tubs meet or exceed performance requirements as listed:

- International Association of Plumbing and Mechanical Officials (IAPMO)® Listed
- Warnock Hersey® (Canada) Listed—CSA test standards: Laundry Tray - #B45.0 and #B45.5; Drain - #B125
- American National Standards Institute (ANSI)—Specification Z 124.6



Specifications

Colors & Models:	Model	Mounting	H x W x D	UPC
White	19F	Floor	34" x 20" x 24"	6 71031 00029 3
White	19W	Wall	34" x 20" x 24"	6 71031 00030 9



General: Furnish and install as shown on plans, UTILATUB® Laundry/Utility Tub model ____ (19F, 19W), as manufactured by E.L. Mustee & Sons, Inc. Tub shall be one-piece molded construction using structural thermoplastics with matched metal molds under extreme heat and pressure. Tub to include integrally molded drain assembly for connection to standard 1-1/2" P or S-trap, stopper and wall mounting hardware or heavy gauge steel legs with built-in levelers. 18 gallon capacity tub, 13" deep. Shall meet ANSI Specification Z 124.6. Color: White. Weight: 19F 23 lbs.; 19W 20 lbs.



MUSTEE

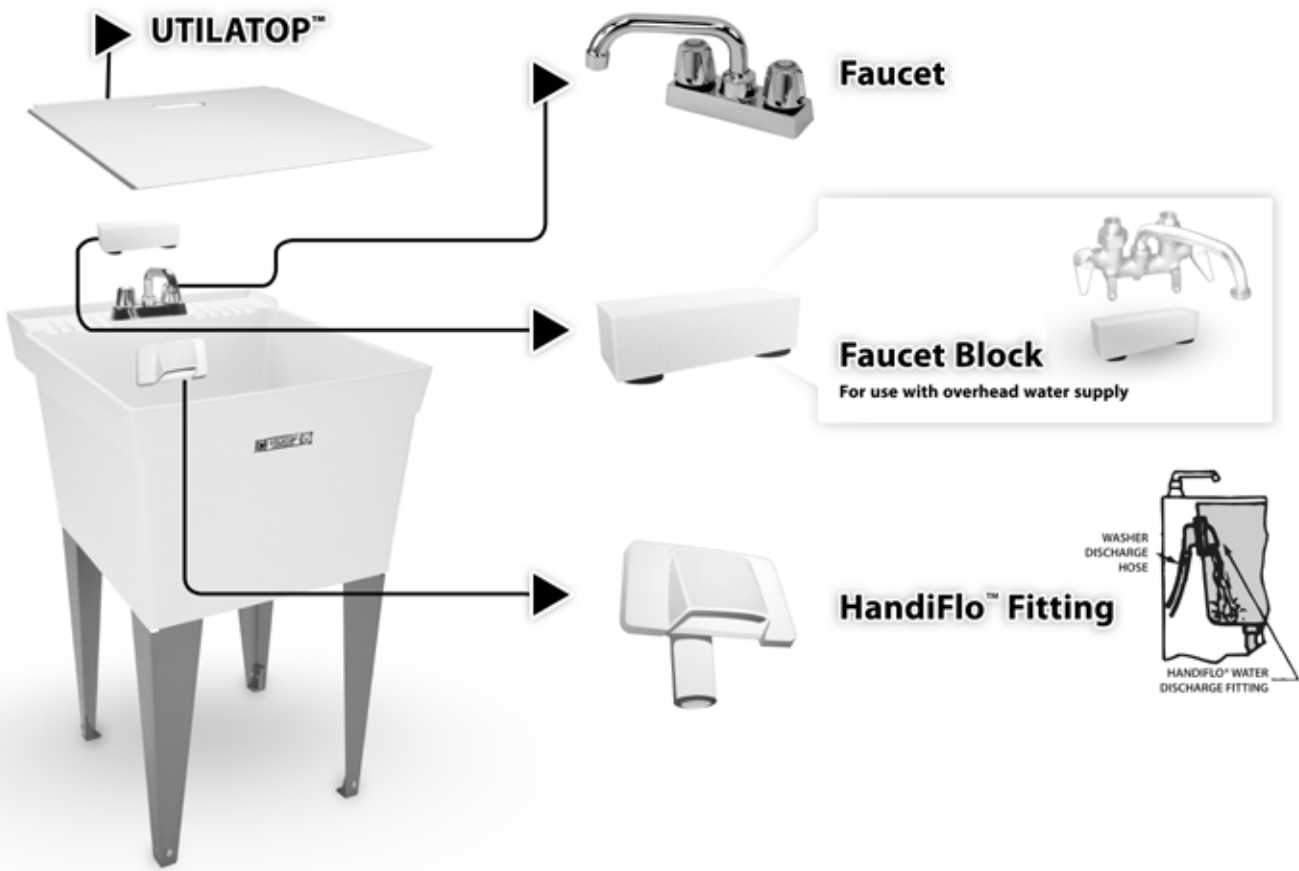
E.L. Mustee & Sons, Inc. • 5431 West 164th Street • Brook Park, OH 44142 • Phone: 216.267.3100 • Fax: 216.267.9997
E-mail: info@mustee.com • Web: www.mustee.com • Proudly made in the USA

Notice: Our continuous commitment to product improvement may result in changes to product specifications without notice.
Patents pending. Made and Printed in U.S.A.



MUSTEE
Preferred by the "Pros"

19F and 19W UTILATUB® Laundry/Utility Tub Accessories

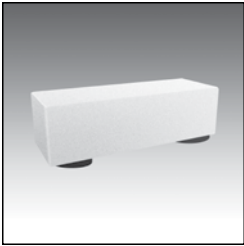


Faucet



Model No.	UPC
93.600	6 71031 00232 7
Chrome finish, 4" center set brass faucet. 6" swing spout with aerator, level handles, replaceable seats and stems. Aerator or hose end.	

Faucet Block



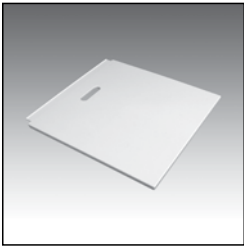
Model No.	UPC
20.600	6 71031 00031 6
Used when water supply lines are above the tub. Mounts to tub shelf when using a clamp-on faucet.	

HandiFlo™ Fitting



Model No.	UPC
94.700	6 71031 00287 7
Dispenses water from washing machine discharge hose into laundry tub. Eliminates draping washer machine hose over back/side wall of laundry tub and conceals discharge hose. Mounts to back or side wall of laundry tub, includes mounting hardware.	

UTILATOP®



Model No.	UPC
19.204A UTILATOP® (White)	6 71031 00380 5
Completely covers tub to create additional counter space. UTILATOP® supports up to 40 lbs.	



MUSTEE

E.L. Mustee & Sons, Inc. • 5431 West 164th Street • Brook Park, OH 44142 • Phone: 216.267.3100 • Fax: 216.267.9997
E-mail: info@mustee.com • Web: www.mustee.com • Proudly made in the USA

Notice: Our continuous commitment to product improvement may result in changes to product specifications without notice.
Patents pending. Made and Printed in U.S.A.