



MUSTEE

Preferred by the "Pros"

26F and 26W UTILATWIN® Laundry/Utility Tubs — Premier

SEE PAGE 2 FOR A LIST OF ACCESSORIES!



Design features:

- High strength, one piece molded construction
- Produced with Mustee's proprietary DURASTONE® — combination of fiberglass and crushed stone blended with special resins for extra strength and durability
- Includes Twin-Drain Waste connector which joins drain assemblies to assure rapid and uniform waste water discharge...includes washers, slip nuts and stoppers.
- Divider wall between tubs is recessed one inch, permitting water to overflow from one tub to other, prevents water spilling onto floor.
- Large, self-draining back shelf with retainer curb that prohibits water run-off except into tub.
- 19 Gallon capacity per tub, extra deep 13" tubs with smooth surfaces
- Connects to standard 1-1/2" P or S trap
- Accommodates single or dual-handle faucets. 4" or 8" centers
- Floor model includes heavy gauge steel legs with adjustable levelers
- Wall model includes wall mounting bracket, side supports and mounting hardware for securing tub to concrete or stud wall
- Mold and mildew-resistant components
- Easy to assemble and install
- Color-fast, marbleized white finish

Code Accepted:

UTILATUB® and UTILATWIN® Laundry/Utility Tubs meet or exceed performance requirements as listed:

- International Association of Plumbing and Mechanical Officials (IAPMO)® Listed
- Warnock Hersey® (Canada) Listed—CSA test standards: Laundry Tray - #B45.0 and #B45.5; Drain - #B125
- American National Standards Institute (ANSI)—Specification Z 124.6



Specifications

Colors & Models:

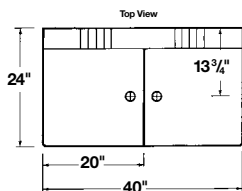
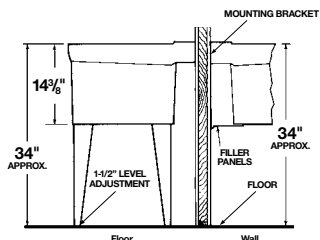
White
White

Model
26F
26W

Mounting
Floor
Wall

H x W x D
34" x 40" x 24"
34" x 40" x 24"

UPC
6 71031 00054 5
6 71031 00055 2



General: Furnish and install as shown on plans, UTILATWIN® Twin Laundry/Utility Tub model ____ (26F, 26W), as manufactured by E.L. Mustee & Sons, Inc. Tub shall be one-piece molded construction using DURASTONE®, a blend of natural crushed stone and polyester resins molded with matched metal molds under extreme heat and pressure. Tub to include integrally molded drains, twin drain waste coupling, recessed divider wall between tubs and twin drain assembly for connection to standard 1-1/2" P or S-trap, stoppers and wall mounting hardware or heavy gauge steel legs with built-in levelers. 19 gallon capacity per tub, each tub 13" deep. Shall meet ANSI Specification Z 124.6. Color: White. Weight: 26F 48 lbs.; 26W 48 lbs.



MUSTEE

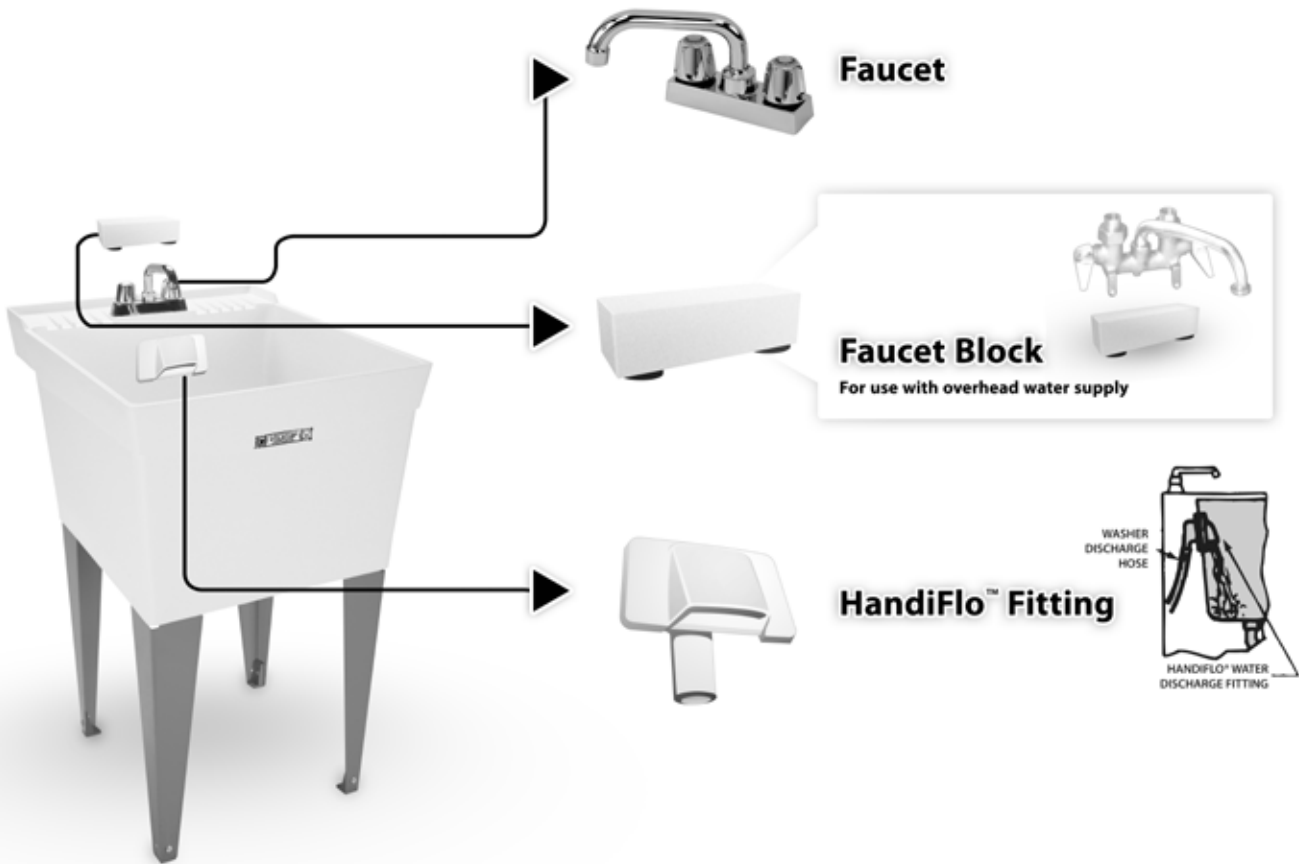
E.L. Mustee & Sons, Inc. • 5431 West 164th Street • Brook Park, OH 44142 • Phone: 216.267.3100 • Fax: 216.267.9997
E-mail: info@mustee.com • Web: www.mustee.com • Proudly made in the USA

Notice: Our continuous commitment to product improvement may result in changes to product specifications without notice.
Patents pending. Made and Printed in U.S.A.



MUSTEE
Preferred by the "Pros"

**26F and 26W UTILATWIN®
Laundry/Utility Tub Accessories**

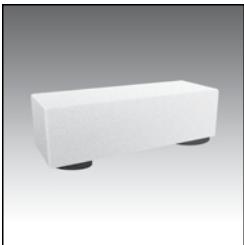


Faucet



Model No.	UPC
93.600	6 71031 00232 7
Chrome finish, 4" center set brass faucet. 6" swing spout with aerator, level handles, replaceable seats and stems. Aerator or hose end.	

Faucet Block



Model No.	UPC
20.600	6 71031 00031 6
Used when water supply lines are above the tub. Mounts to tub shelf when using a clamp-on faucet.	

HandiFlo™ Fitting



Model No.	UPC
94.700	6 71031 00287 7
Dispenses water from washing machine discharge hose into laundry tub. Eliminates draping washer machine hose over back/side wall of laundry tub and conceals discharge hose. Mounts to back or side wall of laundry tub, includes mounting hardware.	



MUSTEE

E.L. Mustee & Sons, Inc. • 5431 West 164th Street • Brook Park, OH 44142 • Phone: 216.267.3100 • Fax: 216.267.9997
E-mail: info@mustee.com • Web: www.mustee.com • Proudly made in the USA

Notice: Our continuous commitment to product improvement may result in changes to product specifications without notice.
Patents pending. Made and Printed in U.S.A.