



MUSTEE
Preferred by the "Pros"

Mop Service Basin — Model 65M

SEE PAGE 2 FOR A LIST OF ACCESSORIES!



Design features:

- All Mustee basins are one-piece molded from high impact resistant DURASTONE® structural fiberglass (24" x 36")
- Elevated, self-draining shelf and removable strainer
- Integral, molded-in drain for connection to 3" ABS, PVC (Sch. 80) or cast iron
- Available drain seals for connection to 2" pipe or 3" soil pipe
- Complete range of accessories to meet specific application needs
- Colorfast marbleized white finish
- Easy to install

Code Accepted

Mustee Mop Service Basins meet or exceed performance requirements as listed:

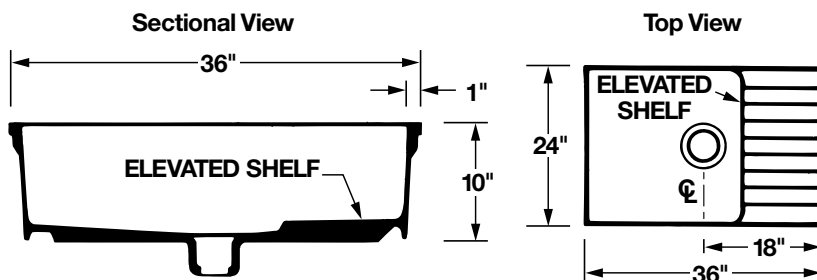
- International Association of Plumbing and Mechanical Officials (IAPMO)® Listed
- Warnock Hersey® (Canada) Listed—CSA test standards: Mop Basins - #B45.0
- American National Standards Institute (ANSI)-Specification Z124.6
- American Society of Testing and Materials (ASTM) D 635 E 84 and E 162
- CAN/ULC S102-07 Burn and Smoke Test



Specifications

Model Number	Color	H x W x D	UPC
65M	White	10" x 36" x 24"	6 71031 00194 8

General: Furnish and install as shown on plans, Mop Service Basin model 65M, as manufactured by E.L. Mustee & Sons, Inc. Unit to be one-piece molded fiberglass made with matched metal molds using extreme heat and pressure. Height shall be 10" with not less than 1" wide shoulder. Size 24" x 36" with integrally molded, self-draining shelf. Drain shall be integrally molded, complete with drain seal for installation of 3" ABS, PVC (Sch. #80) and iron pipe. Removable stainless steel strainer. Performance tested to meet or exceed ANSI Specifications Z 124.1.2, Z 124.6 and FHA/HUD UM-73. Weight 62 lbs., cubic feet 7.0. Install in compliance with local codes.



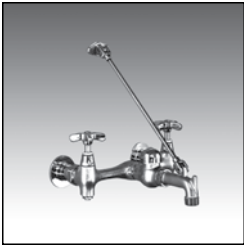
MUSTEE

E.L. Mustee & Sons, Inc. • 5431 West 164th Street • Brook Park, OH 44142 • Phone: 216.267.3100 • Fax: 216.267.9997
E-mail: info@mustee.com • Web: www.mustee.com • Proudly made in the USA

Notice: Our continuous commitment to product improvement may result in changes to product specifications without notice.
Patents pending. Made and Printed in U.S.A.



► **Service Faucet**



Model No.	UPC
63.600A	6 71031 00277 8
Heavy duty, chrome plated brass dual handle sink faucet with top reinforcing bar and pail hook on spout.	

► **Hose and Hose Holder**



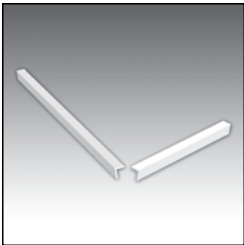
Model No.	UPC
65.700	6 71031 00196 2
Heavy duty 5/8" dia. reinforced 31" rubber hose with brass couplings on one end. Spring loaded, molded rubber hose holder mounts on stainless steel wall plate.	

► **Mop Hanger**



Model No.	UPC
65.600	6 71031 00195 5
Three spring-loaded rubber holders mounted to a 3" x 24" stainless steel wall plate. Click here for more information.	

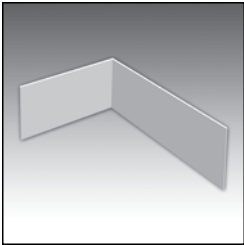
► **Bumper Guards**



Available in high impact resistant molded vinyl (3 versions) or stainless steel (2 versions).

Model No.	UPC
High Impact-resistant vinyl	
63.401 20-3/4" Long	6 71031 00290 7
65.403 32-3/4" Long	6 71031 00291 4
Stainless steel	
63.403 20-3/4" Long	6 71031 00409 3
65.404 32-3/4" Long	6 71031 00410 3

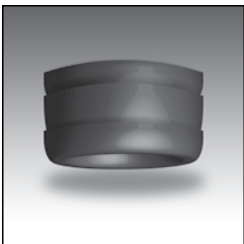
► **DURAGUARD™ Wall Guards**



Protects wall surfaces from splashing and damage from impacts, 12" height, 20 gauge #304 stainless steel.

Model No.	UPC
67.2436 Two panels & bracket for 24" x 36" corner	6 71031 00294 5
67.24C One panel & corner bracket	6 71031 00295 2
67.36C One panel & corner bracket	6 71031 00296 9

► **Optional Seals**



For installations with the following pipe connections:

Model No.	UPC
65.308 For 2" PVC, ABS and iron	6 71031 00303 4
65.309 For 3" PVC, ABS and iron,(Included w/mop basin)	6 71031 00304 1
65.311 For 3" soil pipe (No-Hub)	6 71031 00305 8

