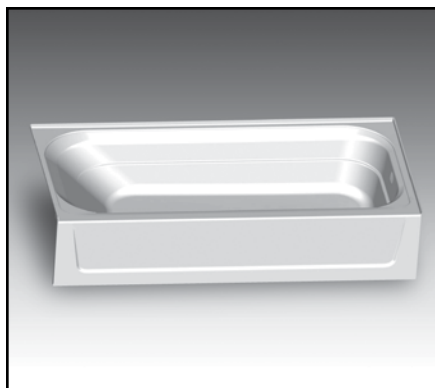




MUSTEE
Preferred by the "Pros"

T6030R TOPAZ™ Fiberglass Bathtubs — Premier Right Hand Drain

SEE PAGES 2-3 FOR VARISTONE,™ TOPAZ™ & DURAWALL® BATHTUB WALLS



Design features:

- Precision molded using Mustee's premium VARISTONE® fiberglass
- Fits standard 30" x 60" alcove
- Apron supported by twin molded fiberglass brackets for extra stability
- A network of bottom and side structural support
- One-piece molded, with matched metal molds for high strength and integral rigidity
- 40° lumbar slope for relaxed reclining while soaking
- 8-1/2" x 14-1/4" drain offset
- Fits a wide range of finished wall options...
 - TOPAZ™ and DURAWALL® premium fiberglass bathtub walls
 - DURAWALL® deluxe thermoplastic bathtub walls
 - Tile walls
 - Solid surface walls
- Easy to clean, colorfast white semi-gloss finish

Code Accepted

TOPAZ™ Fiberglass Bathtubs meet or exceed performance requirements as listed:

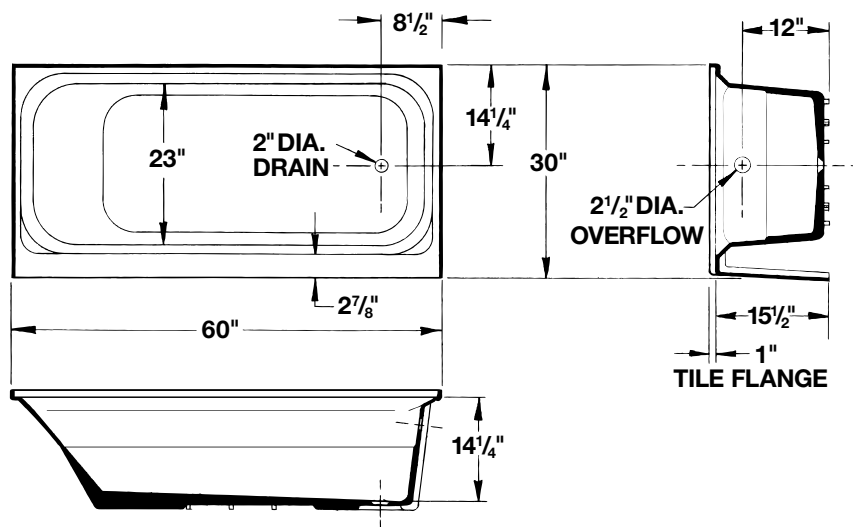
- International Association of Plumbing and Mechanical Officials (IAPMO)® Listed
- American National Standards Institute (ANSI) - Specification ANSI Z 124.1.2



Specifications

Model No.	Color	H x W x L	Drain Position	UPC
T6030R	White	16-1/2" x 30" x 60"	RH	6 71031 00413 0
T6030RBN	Bone	16-1/2" x 30" x 60"	RH	6 71031 00414 7
T6030RBT	Biscuit	16-1/2" x 30" x 60"	RH	6 71031 00432 1

Inside depth: 14-1/4"



General: Furnish and install as shown on plans, TOPAZ® bathtub as manufactured by E.L. Mustee & Sons, Inc. Shall be a fiberglass 30" x 60: right hand or left hand Model _____. Construction shall be molded, reinforced fiberglass using matched metal molds under extreme heat and pressure. Shall meet ANSI Specification Z-124.1.2. Color: _____ (White, Bone, Biscuit) Weight: 74 lbs. Install in compliance with local codes.



MUSTEE

E.L. Mustee & Sons, Inc. • 5431 West 164th Street • Brook Park, OH 44142 • Phone: 216.267.3100 • Fax: 216.267.9997
E-mail: info@mustee.com • Web: www.mustee.com • Proudly made in the USA

Notice: Our continuous commitment to product improvement may result in changes to product specifications without notice. Patents pending. Made and Printed in U.S.A.



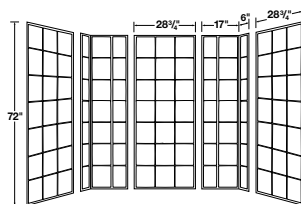
MUSTEE
Preferred by the "Pros"

Premium Fiberglass Bathtub Walls Adhesive & Direct to Studwall Mounted

MORE ON NEXT PAGE ►



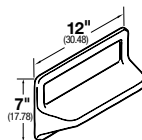
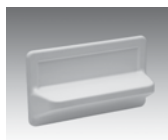
572T VARISTONE™



Up to 60" Wide by 34" Deep

Model	Color
572TWH	White
572TBT	Biscuit

572.300 VARISTONE™ — SHELVES (OPTIONAL)

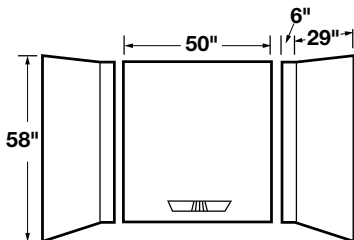


Model	Color
572.300	White
572.300BT	Biscuit

Order desired number of shelves separately. Sturdy, adhesive mounted shelf is easy to install. Carton is 12" x 7 1/4" x 4" and weighs 2.5 lbs.



350 DURAWALL®

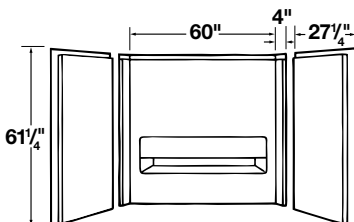


Model	Color
350WHT	White
350BN	Bone
350BT	Biscuit

Fits 30" x 60" Bathtub
Caulking and adhesive provided



660 TOPAZ™ PREMIUM FIBERGLASS BATHTUB WALLS

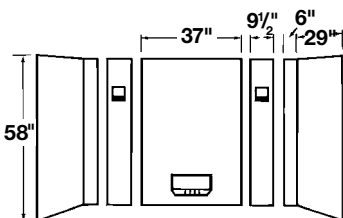


660WHT	White
660BN	Bone
660BT	Biscuit

Fits 30" x 60" Bathtub



500 DURAWALL®



500WHT	White
500BN	Bone

Fits 30" x 60" Bathtub



MUSTEE

E.L. Mustee & Sons, Inc. • 5431 West 164th Street • Brook Park, OH 44142 • Phone: 216.267.3100 • Fax: 216.267.9997
E-mail: info@mustee.com • Web: www.mustee.com • Proudly made in the USA

Notice: Our continuous commitment to product improvement may result in changes to product specifications without notice. Patents pending. Made and Printed in U.S.A.



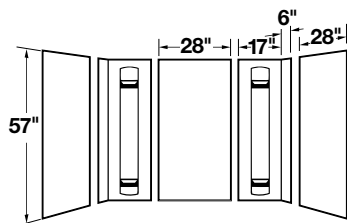
MUSTEE

Preferred by the "Pros"

Deluxe Thermoplastic Walls Adhesive Mount



557 DURAWALL®

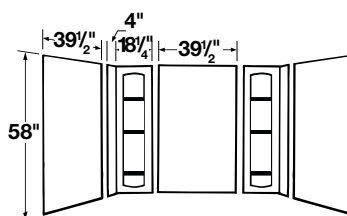


557WHT	White
557BN	Bone

Fits 30" x 60" and 32" x 60" Bathtubs



56 DURAWALL®

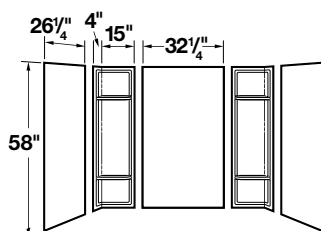


Model	Color
56WHT	White
56BN	Bone

Fit 42" x 72" Bathtub



53 DURAWALL®

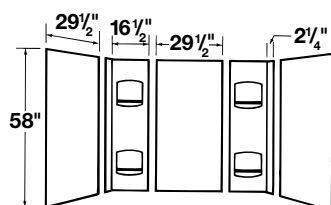


53WHT	White
53BN	Bone

Fit 30" x 60" Bathtub



952 DURAWALL®

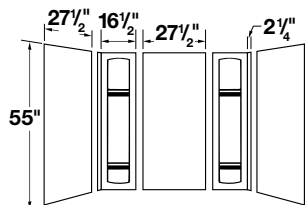


952WHT	White
--------	-------

Fit 30" x 60" Bathtub



950 DURAWALL®



950WHT	White
--------	-------

Fit 30" x 60" Bathtub



MUSTEE

E.L. Mustee & Sons, Inc. • 5431 West 164th Street • Brook Park, OH 44142 • Phone: 216.267.3100 • Fax: 216.267.9997
E-mail: info@mustee.com • Web: www.mustee.com • Proudly made in the USA

Notice: Our continuous commitment to product improvement may result in changes to product specifications without notice.
Patents pending. Made and Printed in U.S.A.